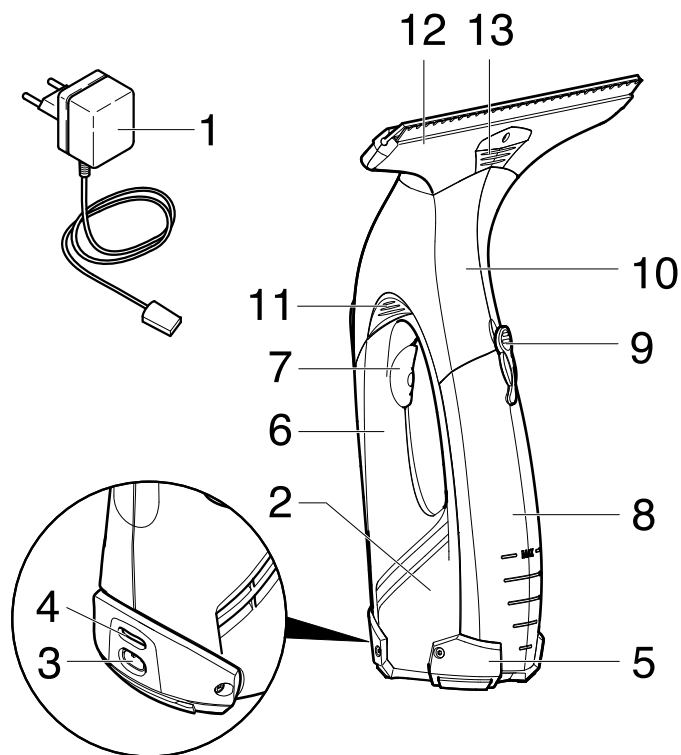


## Start up

### Description of the Appliance

When unpacking the product, make sure that no accessories are missing and that none of the package contents have been damaged. If you detect any transport damages please contact your retailer.

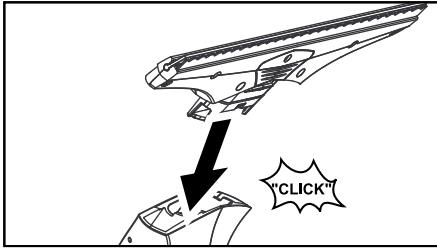
- 1 Charger with charging cable
- 2 **Basic appliance**
- 3 Charging box
- 4 Charge/operations display
- 5 Support leg
- 6 Handle
- 7 ON/OFF switch for appliance
- 8 Dirt water reservoir, removable
- 9 Lock, dirt water reservoir
- 10 **Suction head**
- 11 Release, suction head
- 12 Attachment with removable lips
- 13 Release, attachment



**For household use only!**

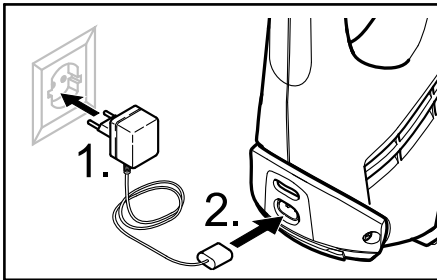
## Assemble the appliance

- Place the attachment on the suction head with the removable lips until you hear it lock in.



## Charge the battery

- Insert the charger delivered with the appliance into a proper socket.
- Insert the charging cable plug to the back of the appliance.

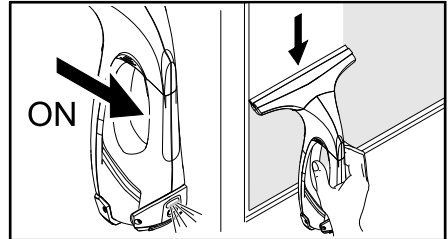


**Note:** During the charging process, the charge/operating display blinks. Once the battery is fully charged, it will be permanently illuminated.

**Recharge the battery after finishing your work.**

## Start working

- Apply conventional window cleaner to cleaning area.
- Switch the appliance on, the charge/operations display will illuminate.
- Pull the appliance from the top to the bottom to vacuum up the cleaning solution residue.



**Note:** Hard to reach areas can be vacuumed vertically or horizontally (limited areas).

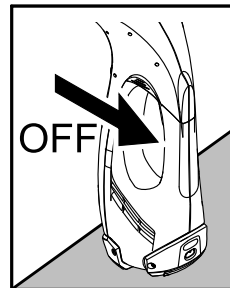
### Notes:

If the battery is low, the charging / power indicator starts flashing slowly and the appliance switches off after a certain time. If this is the case, charge the battery.

*Switch the appliance off after each cleaned surface. This will increase your operating time per battery charge.*

## Interrupting the work

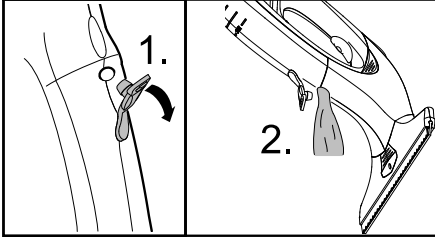
- Set the appliance on the support leg (parking position) and switch it off.



## Emptying the reservoir during operation

Once the max. fill level (mark) of the dirt water reservoir is reached, please empty the tank.

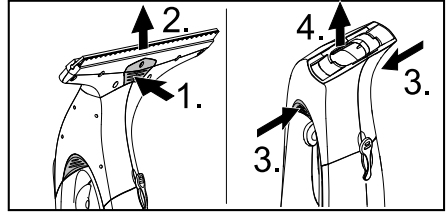
- Turn off the appliance.
- Pull off the lock of the dirt water reservoir and empty the tank.



- Close the dirt water reservoir.

## Finish up your work / clean appliance

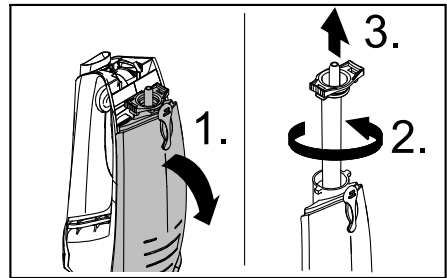
- Turn off the appliance.
- First, release the attachment with the pull-off lips and remove it from the suction head, then release the suction head and remove.



- Clean the suction head and the attachment with the pull-off lips under running water (do not wash in dishwasher).

**Caution:** The basic appliance contains electrical components. Do not clean this under running water!

- Remove the dirt water reservoir, rotate the lock and pull out.



- Empty the reservoir and rinse with clear water. Close the reservoir again.
- Let the cleaned appliance dry prior to assembly.
- Charge the battery.

## Storing the Appliance

- Store the appliance upright in a dry room.